



Karl-Ferdinand-Braun-Str. 2  
71522 Backnang

Telefon  
+49 (0) 7191 960 501

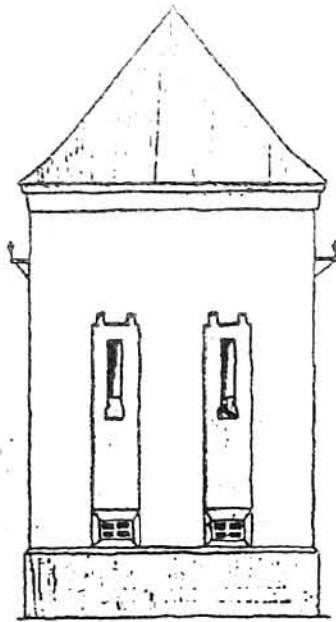
Fax  
+49 (0) 7191 960 502

[info@malerthom.de](mailto:info@malerthom.de)  
[www.malerthom.de](http://www.malerthom.de)

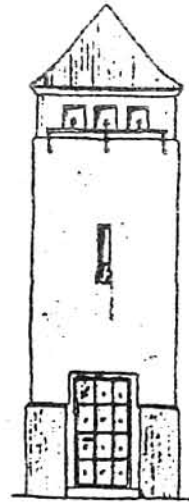
Stationstypen

Oberer Reihe: Stationen erstellt ab 1909,  
 Untere Reihe: Stationen erstellt ab 1950

Beim: F = Grundfläche der Station  
 H = Gesamthöhe der Station



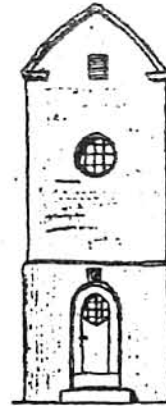
Type 1 F = 21,3 m<sup>2</sup>  
 H = 11,5 m



Type 2 F = 8,7 m<sup>2</sup>  
 H = 9,0 m



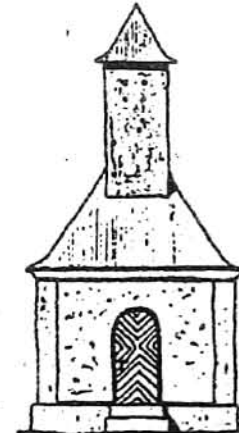
Type 3 F = 4,8 m<sup>2</sup>  
 H = 8,6 m



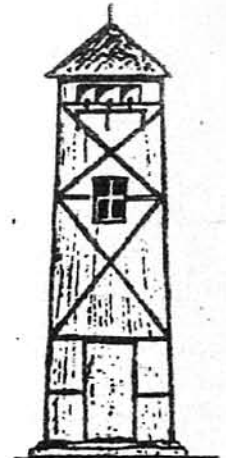
Type MEW II  
 F = 6,7 m<sup>2</sup>  
 H = 7,5 m



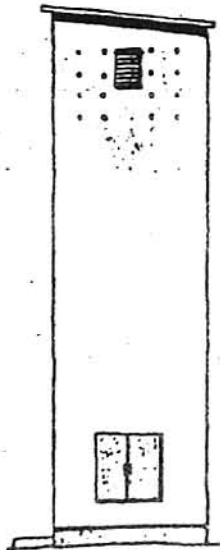
Type MEW III  
 F = 6,9 m<sup>2</sup>  
 H = 8,0 m



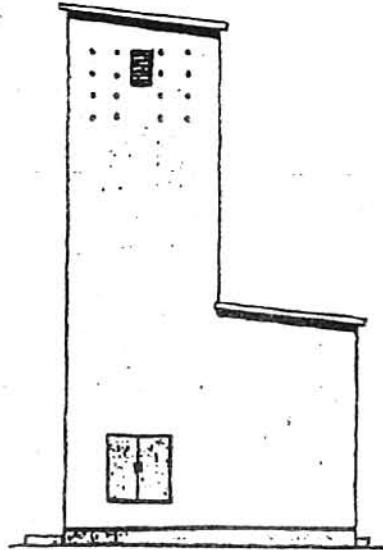
Type H F = 11,4 m<sup>2</sup>  
 H = 7,9 m



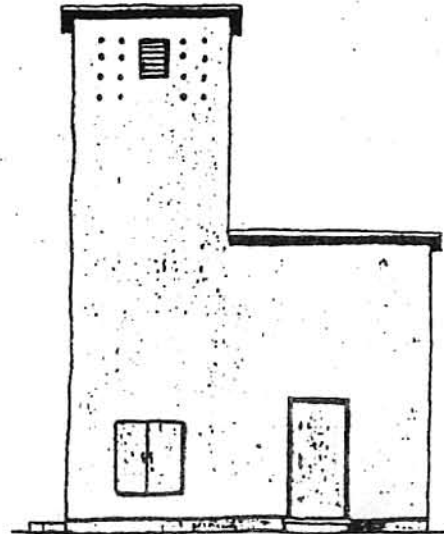
Type Wellblech  
 F = 5,5 m<sup>2</sup>  
 H = 8,5 m



Type T  
 F = 7,8 m<sup>2</sup>  
 H = 10,0 m



Type TA2  
 F = 15,0 m<sup>2</sup>  
 H = 10,0 m / 4,6 m



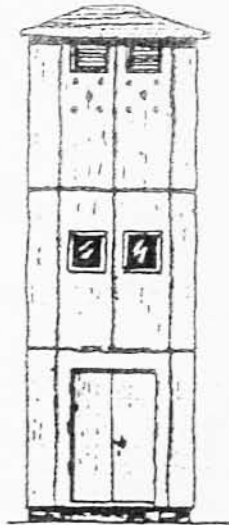
Type TA3 F = 18,5 m<sup>2</sup>  
 H = 10,0 m / 5,4 m

Type ab 1950:	F in m <sup>2</sup>	H in m
S = Sonderbau	versch.	versch.
Au A2 (ohne Freitg.)	15,0	Turmhöhe: ca 10,0 m Anbauhöhe: ca 4,6 - 5,4 m
T	7,8	
TA2	15,0	
TA3	18,5	
TAu A2	22,1	
TAu Au A2	28,6	
TTAu A2	28,6	

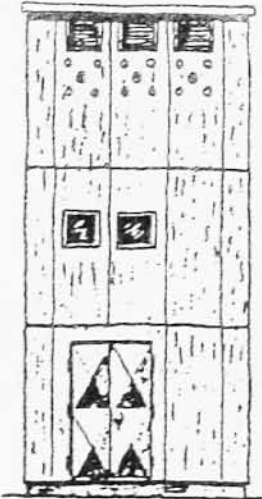


Type AuA3

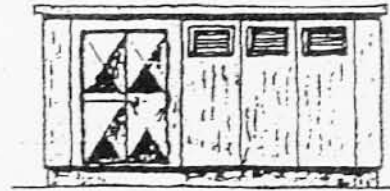
Kabelstationen ab 1950



Type C



Type D



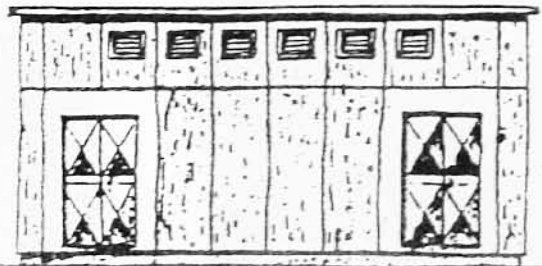
Typen E10 u. E20



Compost-Stationen  
ab 1965

Basiselemente-Stationen ab 1963

Kleinstationen ab 1972



Type F

kunststoff-  
gekapselte  
station Fabrit.  
Falter & Guillebume



aluminiumblech-  
gekapselte station  
Fabr. Wichmann

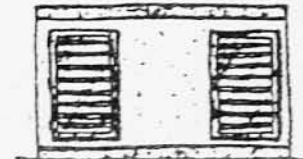


Beton-Fertigstationen Fabr. Mor-Beton

Type K3

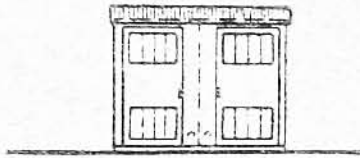


Typen K4 u. KK4

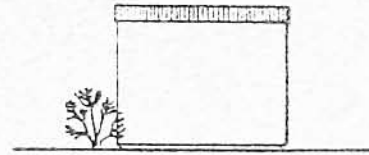


Schwerpunkt-  
Transformator  
ab 1973

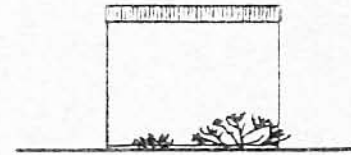




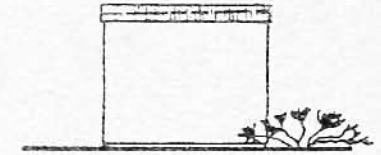
VORDERANSICHT



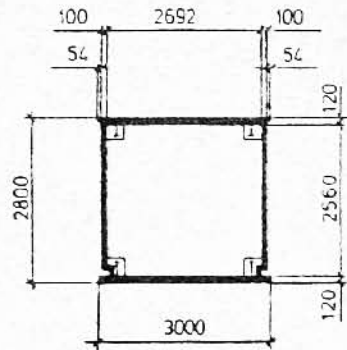
SEITENANSICHT LINKS



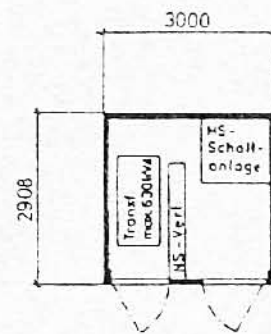
RÜCKANSICHT



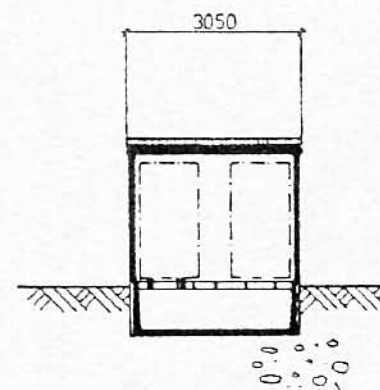
SEITENANSICHT RECHTS



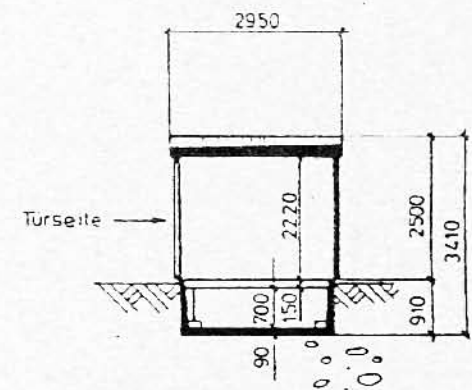
FUNDAMENTGRUNDRISS



E.G. GRUNDRISS

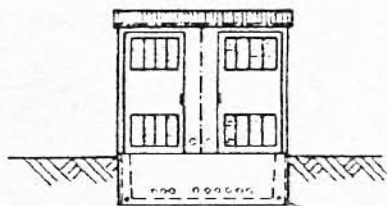


LÄNGSSCHNITT



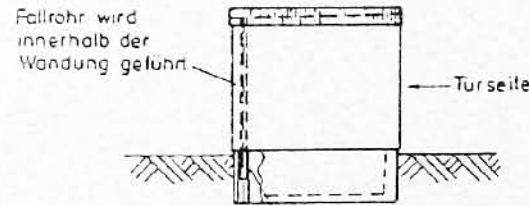
QUERSCHNITT

je nach Bodenbeschaffenheit Sand- oder Kiesbett plan abgezogen oder Betonplatte bauseitig vorsehen



je nach Bodenbeschaffenheit Sand- oder Kiesbett plan abgezogen

Anhebestellen für komplette Station  
DACHENTWASSERUNG



Fallrohr wird innerhalb der Wandung gelüht

Türseite

Regenfallrohr Außen-  $\varnothing$  75 mm mit Anschlussstück auf DN100 mündet in Sickerschacht oder Drainage (bauseitig bestimmen)